

easy
LIVING



fixed price
\$680,000*

first home owners \$670,000^

Images for illustrative purposes only & may depict upgrade options available at additional charges such as lighting, window furnishings, timber look garage door & timber windows. Pricing also excludes features not supplied by Carlisle inc. fencing, landscaping, letterbox, decking & driveway. Façade details re. entry door, window sizes & placements may vary between house types & sizes. Refer to working drawings for specific locations and sizes.

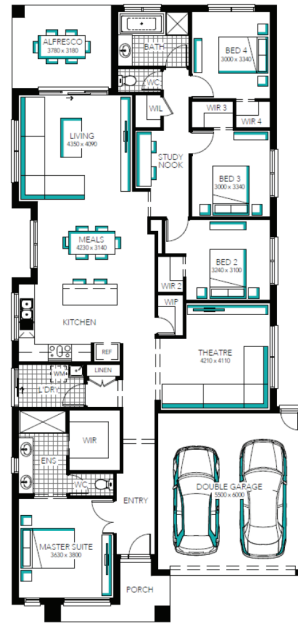


Edgewood 25 MK2 FF

Lot 612 (436m²) Lara Lakes, LARA

**MORE
LUXURY
INCLUSIONS#**

- ✓ FIXED PRICE SITE COSTS AND CONNECTIONS
- ✓ DEVELOPER AND COUNCIL REQUIREMENTS
- ✓ UPGRADED SLAB - H CLASS
- ✓ TIMBER-LOOK FLOORING OR ENHANCE FLOOR TILES (TO ENTRY, KITCHEN, MEALS, FAMILY)
- ✓ CAESARSTONE® BENCHTOPS
- ✓ FEATURE OVERHEAD CUPBOARDS TO KITCHEN
- ✓ FEATURE KITCHEN PENDANT LIGHTS
- ✓ LOW-IRON GLASS KITCHEN SPLASHBACK
- ✓ PARADOX ALARM SYSTEM
- ✓ FISHER & PAYKEL DISHWASHER
- ✓ SEMI-FRAMELESS 2000MM HIGH SHOWER SCREEN
- ✓ SHOWER RECESS WITH TILED SHOWER BASE
- ✓ 6 STAR ENERGY RATING



**CARLISLE
HOMES**

FOR ENQUIRIES CONTACT:

Peter Stathopolous 0427 275 995 | w: easylivingbycarlisle.com.au

Open Saturday-Wednesday from 11am-5pm

155 Patullos Rd LARA 3212

Lara Lakes

LARA

*Fixed Price current as of 03/02/2023. Fixed Pricing based on developer engineering plans & plan of subdivision. Hebel homes may be smaller than dimensions shown on the floorplan due to the external wall thickness; see working drawings for Hebel home dimensions. Confirm land prices and availability prior to purchase. Subject to developer and council approval. Price does not include any stamp duty, government, legal or bank charges. Alterations may incur additional charges. Carlisle reserves the right to withdraw or amend pricing, inclusions and promo without notice. Bushfire (BAL) requirements will be credited back to the client if Carlisle Homes receives confirmation that the house is not being constructed in a BAL designated area. This cannot be confirmed until site survey and property information from relevant authorities is received. ##The More Luxury Promotion applies to new quotes & initial deposits on Carlisle's Easy Living Collection from 6th January 2023 & is available only in conjunction with the Easy Living 365 inclusions. See a Sales Consultant and visit carlislehomes.com.au/disclaimer/ for further details. Speak to a Sales Consultant for further details or visit [carlislehomes.com.au/disclaimer.](http://carlislehomes.com.au/disclaimer/) ©2023 Carlisle Homes PTY LTD. Registered Building Practitioner CBD-U 50143.