


**Lara**

24 sq  4  2  2  517m<sup>2</sup>

### House & Land Package

Lot 524 Wattlebird Drive (Lara Lakes), Lara

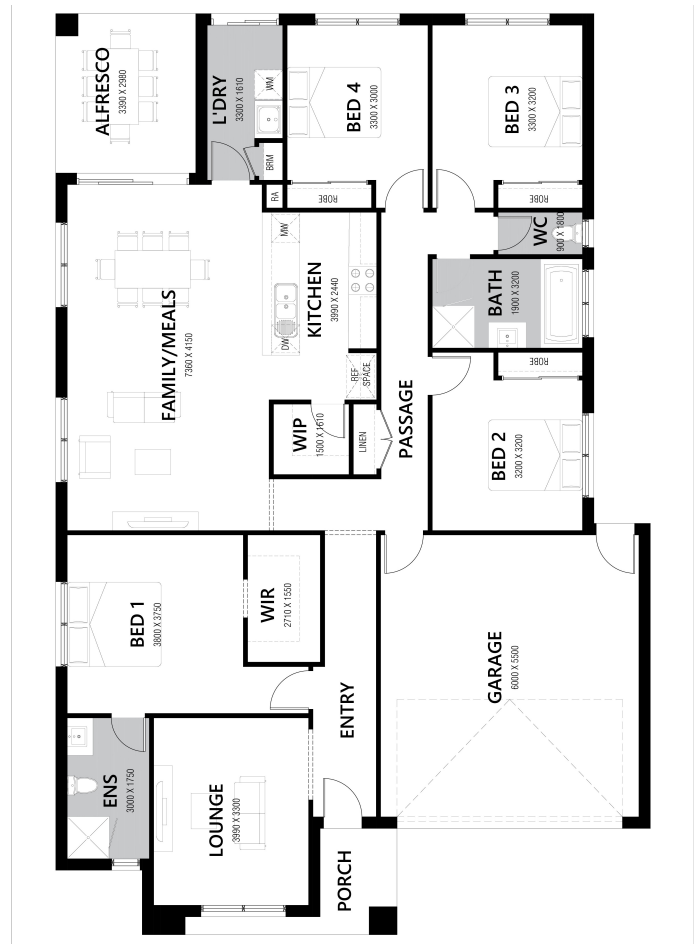
**TITLED \$709,700-PREMIUM  
TURNKEY Montville 24**

#### OVER \$70K OF PREMIUM INCLUSIONS

- Front & rear landscaping
- Half share fencing & driveway
- Flooring throughout
- Higher ceilings
- Stone benchtops to kitchen & bathrooms
- LED downlights throughout
- Modern appliances including dishwasher
- Overhead cupboards to kitchen
- Blinds throughout
- 5kW split system cooling
- Ducted heating throughout
- Tiled shower bases
- Chrome finish double towel rails and toilet roll holders
- Framed mirror or vinyl sliding doors to robes
- Brick infills over windows
- Remote control garage
- Window locks & flyscreens to all openable windows
- Clothesline and letter box
- NBN connection
- Multiple facade options

**Contact - Shweta Kharbanda**

Mobile: 0474 321 859 | Email: shweta@hlvictoria.com.au



\*Pricing correct at time of publication, but subject to change without notice due to (not limited to) land delays and regulation changes. Package price excludes stamp duty on land, legal fees and conveyancing costs including titles and property report. Floorplan is a representation of a standard facade unless otherwise stated. H & L reserves the right to alter the images or descriptions without notice. External & Internal photographs are for visual purposes only.