



**LONG  
ISLAND  
HOMES**

**Karen Reynolds**

Mobile: 0414 725 051

[Karen.r@longislandhomes.com.au](mailto:Karen.r@longislandhomes.com.au)

[www.longislandhomes.com.au](http://www.longislandhomes.com.au)



Price based on standard floorplan and façade. Image depicts upgrade items not included in price.

**\$607,690**

## **APPLE GUM ESTATE LARA**

Frontage: 16m

Package Price: **\$607,690**

Lot Number: 13

Lot Size: 512m<sup>2</sup>

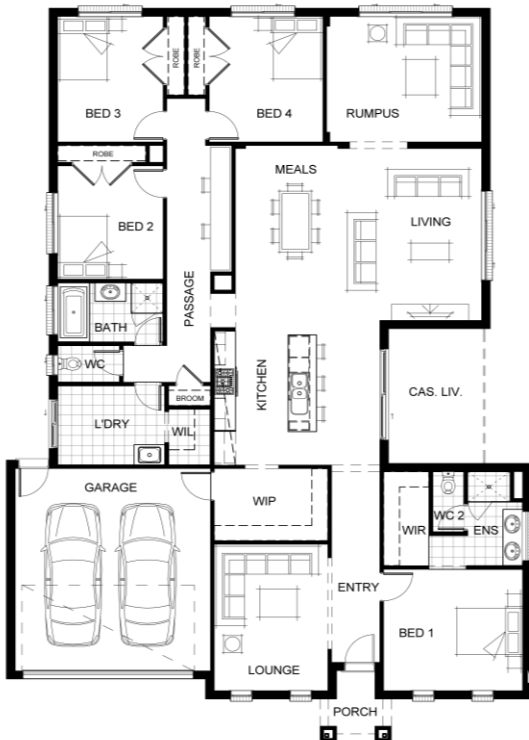
House: **TAYA 290**

At a glance:



**Inclusions List:**

- Site Cost Allowance Included
- Floor Coverings Throughout
- 900mm Stainless Steel Appliances
- 20mm Stone to Kitchen, Bathroom & Ensuite
- Ducted Heating
- 2590mm Ceiling Heights
- Designer Façade



Photographs in this brochure are for illustration purposes only and may depict external building materials that are not permitted pursuant the restrictions contained in proposed plan of subdivision (including, but not limited to, the memorandum of common provisions) and the restrictive covenant (instrument no. F231341) currently registered on the parent title (restrictive covenant).

The photographs do no constitute a representation by the vendor (or its employees/agents/consultants) in respect to permitted external building materials in any manner.

The vendor is endeavouring to remove the restrictive covenant from the parent title, however, in the event that it is not removed, Purchasers purchase a lot subject to the restrictive covenant.

Purchasers should not rely on the photographs in any way, and must make and rely on their own enquires.

**Bisinella**  
*the key to your community*

**[bisinella.com.au](https://www.bisinella.com.au)**

**Bisinella Head Office**  
Email [sales@bisinella.com.au](mailto:sales@bisinella.com.au)