

Price includes standard floorplan with Q1-D facade.



Artist impression. Furniture, landscaping, driveway, window furnishing and porch decking is not provided by Urbanedge Homes.

FIRST HOME BUYERS PRICE \$529,336 ^

FIXED PRICE HOUSE & LAND

Sala **4-27**

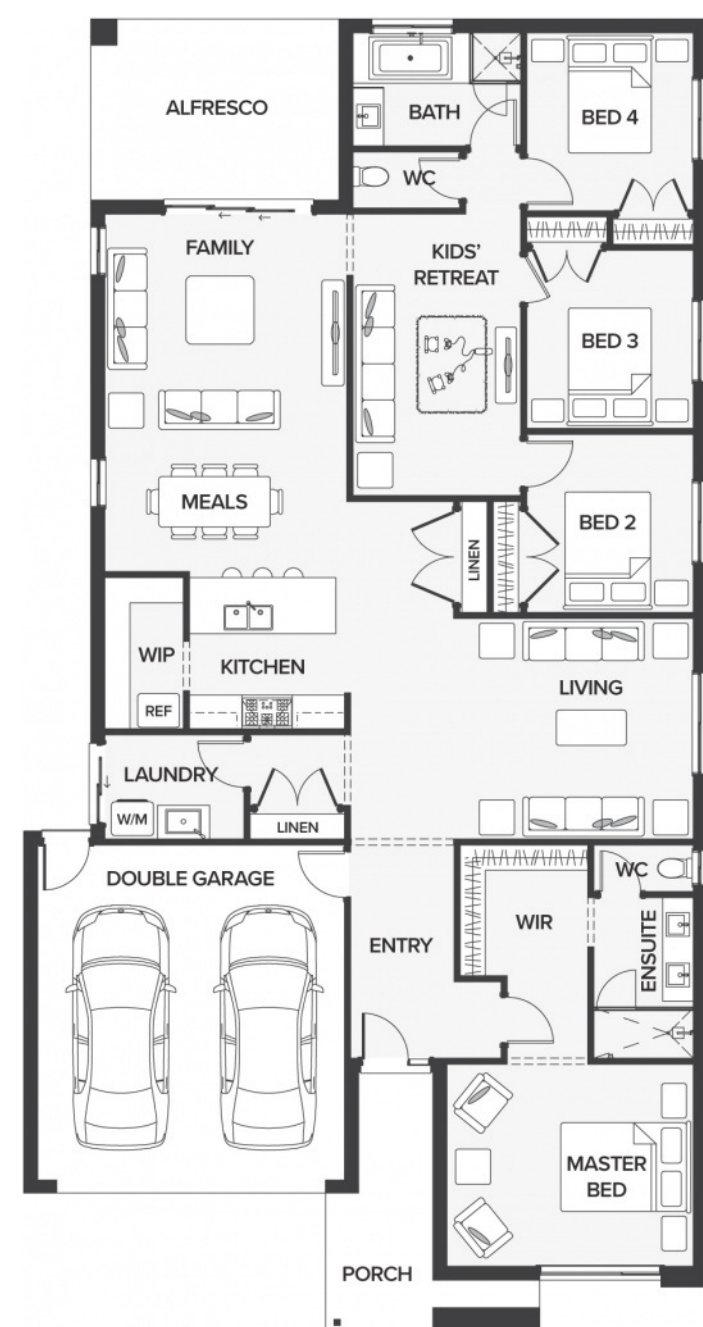
Lot 110, Pathfeild St
LAND SIZE: 448.00m²



253.7m² | 27.31 sqs

- ▲ Architecturally inspired fully rendered facade
- ▲ Brickwork or rendered foam above all ground floor windows and sliding doors
- ▲ Smeg Appliances to Kitchen
- ▲ Floor coverings throughout
- ▲ Silestone benchtops to Kitchen and Ensuite(s) Bathroom
- ▲ Base Cabinetry to Laundry
- ▲ and much more ...

edge
inclusions



Please Contact
Brett Swan
0432 615 388
bretts@urbanedgehomes.com.au

Luxury Redefined
urbanedgehomes.com.au