



Journey INTO STYLE | 2021
**EMBARK
UPGRADES**

HOME AND LAND

Images shown are for illustrative purposes only and may not represent the final product such as lighting, window furnishings, timber look garage door & timber windows. Façade details including entry door and window sizing may vary between house types. Pricing also excludes features such as fencing, landscaping, letterbox, decking, driveway and any notable features of the façade. Please speak with your sales consultant for further details.

LOT 311, WATTLE GROVE ESTATE, CORIO (512M2)

FLOOR PLAN: ALTON 24_223
FACADE: MAWSON

FIXED PRICE

\$573,095

FIRST HOME OWNERS PRICE \$553,095

4 🚗 2 🍷 2 🚗 2 🚗 24sq 📏

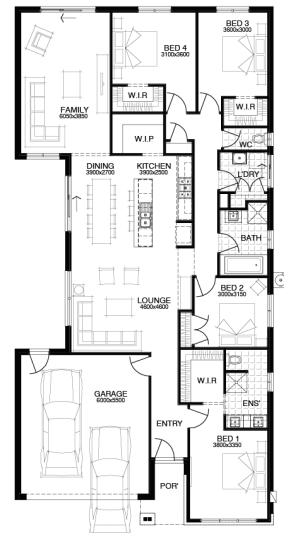
ADD A TOUCH OF LUXURY TO YOUR HOME TODAY & SAVE!



Journey
INTO STYLE | 2021
SAVE ON
LUXURY

PACKAGE INCLUSIONS:

- ▼ DEVELOPER & COUNCIL REQs
- ▼ FLOORING THROUGHOUT
- ▼ 20MM CAESARSTONE BENCHTOP TO KITCHEN
- ▼ OVERHEAD CUPBOARDS TO KITCHEN
- ▼ 20 DOWNLIGHTS
- ▼ BRICKWORK OVER WINDOWS
- ▼ COLOURED CONCRETE DRIVEWAY UP TO 40M2
- ▼ REMOTE TO GARAGE DOOR
- ▼ NBN PROVISIONS (EXCLUDES HUB)
- ▼ TOWEL RAILS & TOILET ROLL HOLDERS



For enquiries please contact:

Bruno Esposti
0435219103
Simonds.com.au

Geelong

GEELONG VIC 3220
bruno.esposti@simonds.com.au

