



VENTURE UPGRADES
Plus
FLOORING INCLUDED



HOME AND LAND

Images shown are for illustrative purposes only and may not represent the final product such as lighting, window furnishings, timber look garage door & timber windows. Façade details including entry door and window sizing may vary between house types. Pricing also excludes features such as fencing, landscaping, letterbox, decking, driveway and any notable features of the façade. Please speak with your sales consultant for further details.

LOT 315, WATTLE GROVE ESTATE, CORIO (528M2)

FLOOR PLAN: LIBERTY 21_203
FACADE: TRIBECA

FIXED PRICE

\$540,989

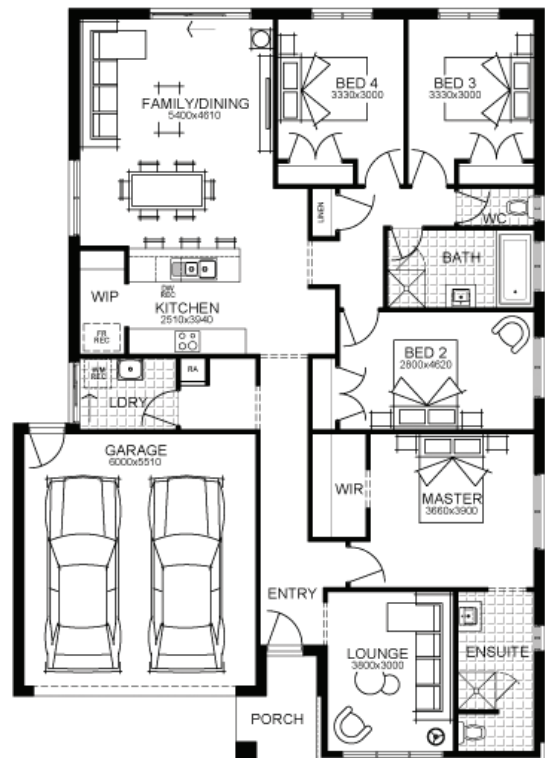
FIRST HOME OWNERS PRICE \$520,989

4 🚗 2 🍷 2 🚗 2 🚗 22sq 📏



PACKAGE INCLUSIONS:

- DEVELOPER & COUNCIL REQs
- FLOORING THROUGHOUT
- 20MM CAESARSTONE BENCHTOP TO KITCHEN
- OVERHEAD CUPBOARDS TO KITCHEN
- 20 LED DOWNLIGHTS
- BRICKWORK OVER WINDOWS
- 900MM APPLIANCES
- DISHWASHER
- 2590 CEILING HEIGHTS
- REMOTE TO GARAGE DOOR



For enquiries please contact:
Bruno Esposti
0435219103
Simonds.com.au

Geelong
GEELONG VIC 3220
bruno.esposti@simonds.com.au

