


Lara

25 sq 4 2 2 517m²

House & Land Package

Lot 203 Reflection Cres, Lara

TURNKEY \$609,990*

HURRY AND CALL JESS ON 0458 131 089 FOR FURTHER INFO.

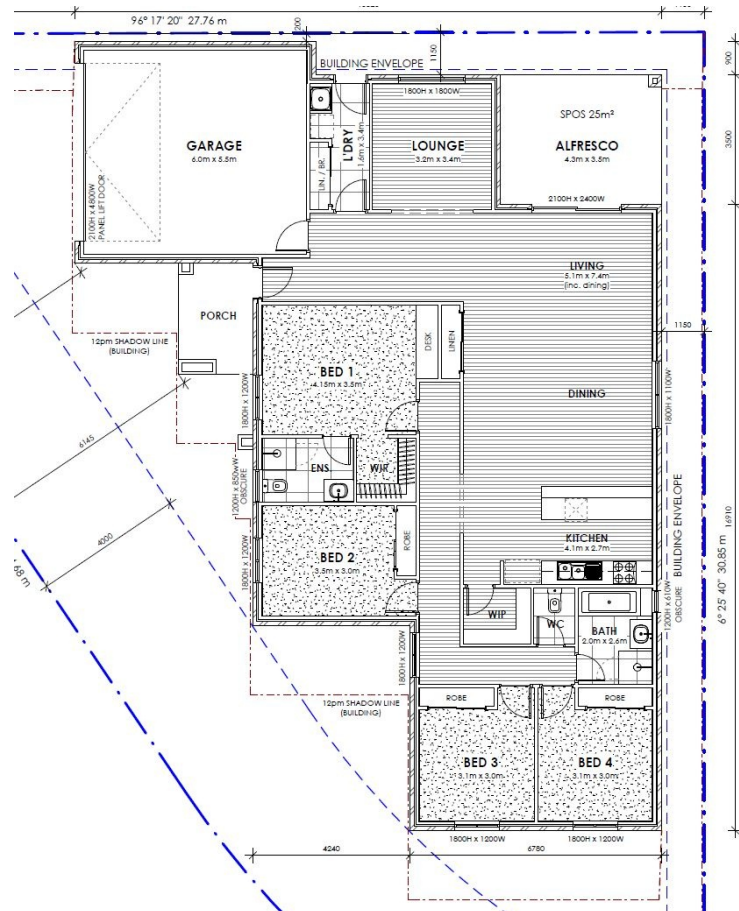
* THE PRICE WILL BE \$619,990 IF YOU ARE NOT ELIGIBLE FOR THE FIRST HOME BUYER GRANT

STANDARD INCLUSIONS

- Carpet & tile flooring
- Coloured concrete driveway
- 2590mm ceiling heights
- 20mm stone benchtops to kitchen, bathroom & ensuite
- LED downlights
- Sliding doors to wardrobes
- Brick above windows
- Remote control garage
- Site costs based on H class slab
- Council requirements
- Front & Rear landscaping
- Clothesline and letterbox
- Split system.
- Holland Blinds

THIS IS A HOUSE & LAND PACKAGE WHICH HAS NOT BEEN CONSTRUCTED. PLEASE INQUIRE TO FIND OUT ESTIMATED BUILD TIME.

*THE FIRST HOME OWNERS GRANT OF \$10,000 HAS ALREADY BEEN



Contact - Jess Liversidge

Mobile: 0458 131 089 | Email: jess@hlvictoria.com.au

Pricing based on developer supplied engineering & plan of subdivision. Land prices and availability prior to purchase will need to be confirmed. Community Infrastructure Levy and Asset Protection not included in pricing and to be arranged directly by client with developer (where applicable). Subject to developer and council approval. Package price does not include any stamp duty, government, legal or bank charges. Alterations made may incur additional charges. H&L Victoria PL reserves the right to withdraw or amend pricing and inclusions without notice. Images for illustrative purposes only and may depict upgrade options available at additional charges such as lighting, window furnishings, timber look garage door and timber windows.