



Journey INTO STYLE | 2021  
**EMBARK  
UPGRADES**

# HOME AND LAND

Images shown are for illustrative purposes only and may not represent the final product such as lighting, window furnishings, timber look garage door & timber windows. Facade details including entry door and window sizing may vary between house types. Pricing also excludes features such as fencing, landscaping, letterbox, decking, driveway and any notable features of the facade. Please speak with your sales consultant for further details.

LOT 407, WATTLE GROVE ESTATE, CORIO (436M2)

FLOOR PLAN: CURRAWONG 16\_155  
FACADE: CLYDE

**FIXED PRICE**

# \$514,843

FIRST HOME OWNERS PRICE \$494,843

3 2 2 1 16sq

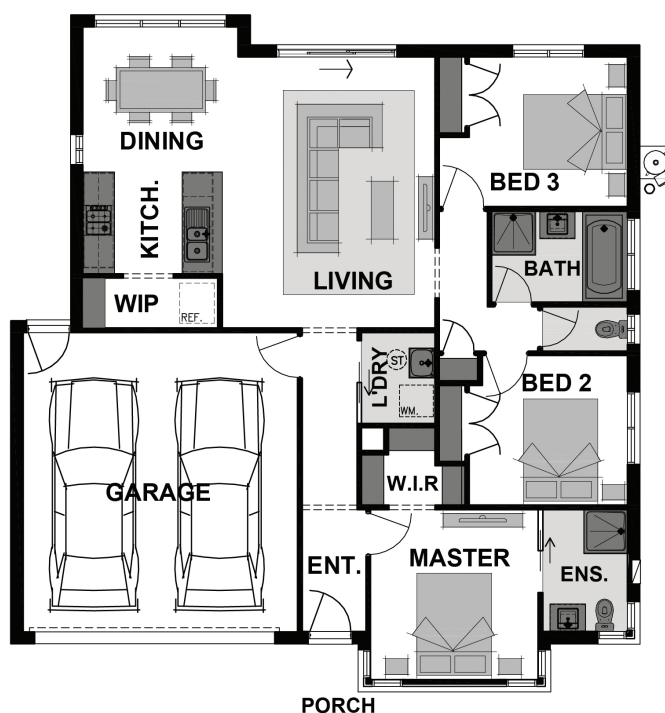
ADD A TOUCH OF LUXURY TO YOUR HOME TODAY & SAVE!



**Journey**  
INTO STYLE | 2021  
SAVE ON LUXURY

## PACKAGE INCLUSIONS:

- ▼ DEVELOPER & COUNCIL REQS
- ▼ FLOORING THROUGHOUT
- ▼ 20MM CAESARSTONE BENCHTOP TO KITCHEN
- ▼ OVERHEAD CUPBOARDS TO KITCHEN
- ▼ 20 DOWNLIGHTS
- ▼ BRICKWORK OVER WINDOWS
- ▼ COLOURED CONCRETE DRIVEWAY UP TO 40M2
- ▼ REMOTE TO GARAGE DOOR
- ▼ NBN PROVISIONS (EXCLUDES HUB)
- ▼ TOWEL RAILS & TOILET ROLL HOLDERS



**For enquiries please contact:**

Bruno Esposti  
0435219103  
Simonds.com.au

Geelong

GEELONG VIC 3220  
bruno.esposti@simonds.com.au

