




ARCHIE 226

\$685,119

**Lot 108 Flinders Walk Estate Archie 226
Lara**

4  **2**  **2** 

Titles Oct 2025

The Archie 226 House and Land Package!

* NCC Compliant Floorplan

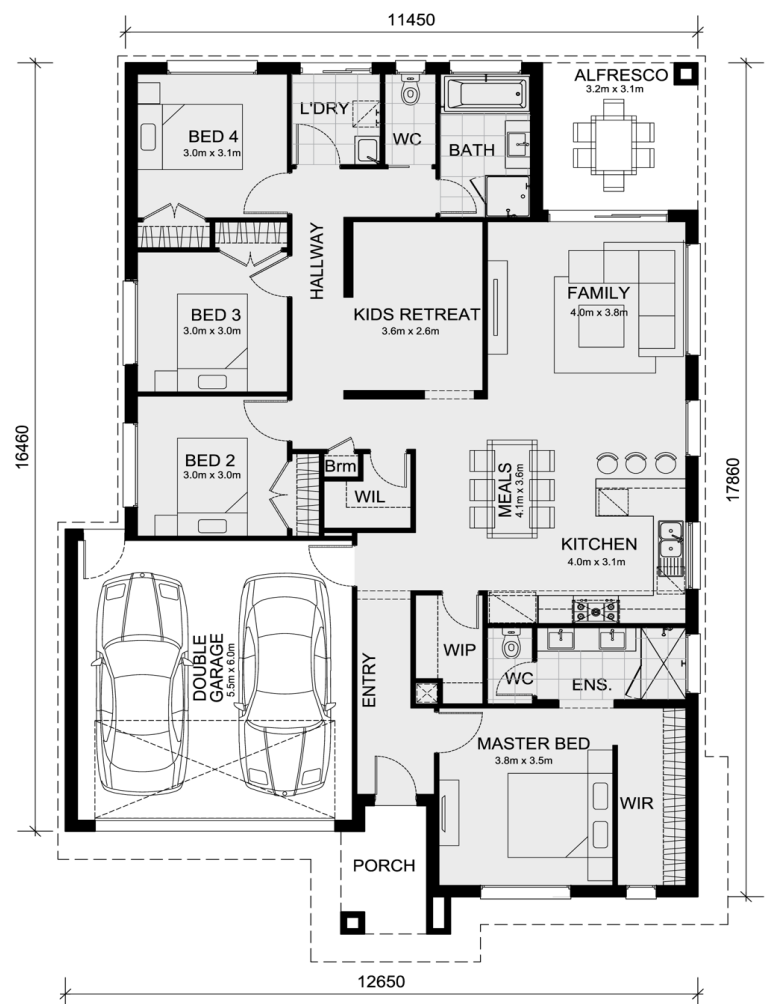
* Mimosa Homes Added Value Inclusions:

- Inclusive of site costs & connections with H1 class slab as per standard inclusions!
- Quality floor coverings throughout entire home!
- Higher ceilings 2550mm to ground floor!
- Double Glazed Awning windows
- Downlights to living areas!
- Vitrified Compact Surface benchtop to kitchen!
- 900mm S/S upright oven and cook top with S/S canopy rangehood!
- Stainless steel Dishwasher and Microwave with trim kit!
- Overhead cupboards & wine rack! (Design specific)
- Remote control panel sectional lift garage door!
- 7 star energy with solar hot water!
- Flexible floor plans & so much more!

CALL BUILDER DIRECT!

All plans and facades are indicative concepts only and are not intended to be accurate depictions.

Mimosa Homes reserves the right to amend plans



Area Details

Land Size 420 Building Size 208

Contact: Beau Huppert
beau@mimosahomes.com.au

0435 123 663
www.mimosahomes.com.au