



# SABA 260

# \$733,000

**Lot 424 Lara Lakes Estate  
Lara**



## Mimosa Homes Proudly Presents

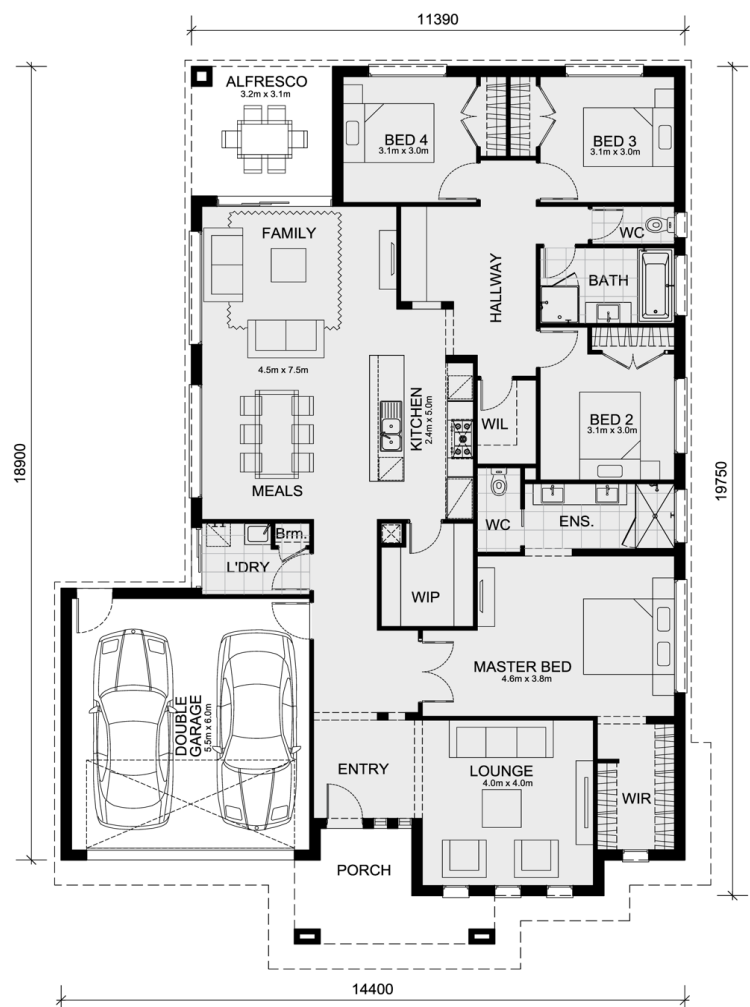
The Saba 260 House and Land Package!

\* NCC Compliant Floorplan

\* Mimosa Homes Added Value Inclusions:

- Inclusive of site costs & connections with H1 class slab as per standard inclusions!
- Quality floor coverings throughout entire home!
- Higher ceilings 2550mm to ground floor!
- Double Glazed Awning windows
- Downlights to living areas!
- Vitrified Compact Surface benchtop to kitchen!
- 900mm S/S upright oven and cook top with S/S canopy rangehood!
- Stainless steel Dishwasher and Microwave with trim kit!
- Overhead cupboards & wine rack! (Design specific)
- Remote control panel sectional lift garage door!
- 7 star energy with solar hot water!
- Flexible floor plans & so much more!

CALL BUILDER DIRECT!



### Area Details

Land Size	493sqm	Building Size	246sqm
-----------	--------	---------------	--------

**Contact: Nirav Patel**  
nirav@mimosahomes.com.au

0468463103  
www.mimosahomes.com.au