




ARMADALE 253

\$721,609

**Lot 435 Wattlebird Drive
Lara - Lara Lakes**

4  **2**  **2** 

For a limited time, take advantage of our Made for You Promotion—a remarkable offer valued at \$20,450 for FREE! This package includes:

First Impressions:

- Brick infills to the side and rear of the home (2550mm ceiling height)
- Low-profile roof tiles (Monier Atura Range only)

Refresh & Renew:

- 20mm Vitrified Compact Surface Benchtop to Bathroom (Essential Range)
- 20mm Vitrified Compact Surface Benchtop to Ensuite (Essential Range)
- 600mm Single Towel Rails or Rings & Toilet Roll Holders (Design Specific)
- Recessed Tiled Shower Base with Tiled Insert Grate to Ensuite or Bathroom
- Tiled Insert Grate to Ensuite Shower Recess (In lieu of standard)
- 800mm Wide Laminate Trough to Laundry

Chef's Selection:

- 40mm Vitrified Compact Surface to Kitchen (In Lieu of 20mm, Excludes WIP)
- Pot Drawers to Kitchen (2 Banks of 3) & Undermount Sink to Kitchen

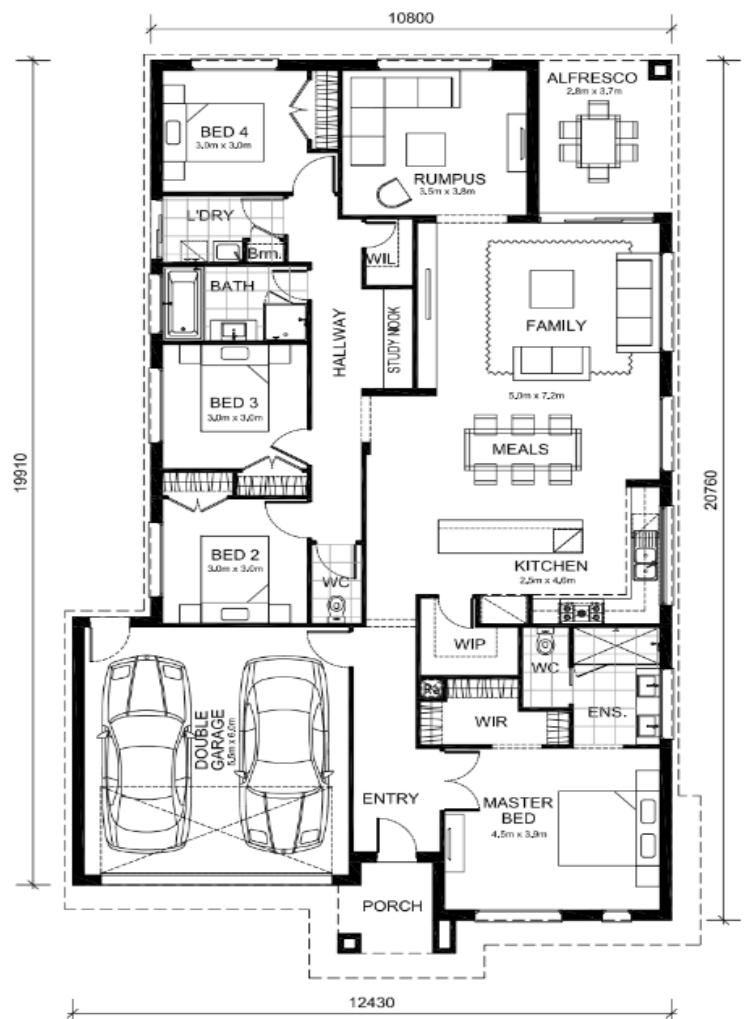
Power Play:

- Fibre Optic Provision & Intercom and Doorbell System
- LED Downlights to Entire Home
- Additional Powerpoints Throughout Entire Home (5x Double Powerpoints)
- Additional Downlights Throughout Entire Home (6x Downlights)

Cool and Comfort:

- Low Profile Evaporative Cooling Unit (up to 8 points or 2 split systems)

We're also offering up to 50% off site costs, and Added Value inclusions valued at \$42,688 at no extra cost! This offer is exclusive to this house and land package and valid for a limited time only.



Area Details

Land Size 518sqm Building Size 233sqm

Contact: Jay Yu
jay@mimosahomes.com.au

0414 416 828
www.mimosahomes.com.au