



## House Plan:



## LOT #729

Lara Lakes

Address: Coogan Street, Lara, 3212



476 m<sup>2</sup>

## Maldives 24 - Melbourne - Classic

Package Price From

4 2 2 24 sq

**\$715,000\***

## About package:

- All our house designs are fully customisable or bring your own design
- Home Group will build it!

### Including our \$30,000 DESIGNER KITCHEN:

- Huge 1200mm Wide Island Bench with breakfast bar
  - Stone Benchtops
  - European High Gloss Cabinetry
  - Lift up overhead Cupboards
  - Extensive Drawers
  - 900mm Westinghouse Freestanding Stove
  - Integrated Electrolux Rangehood
  - Microwave recess with pot drawer
- All of this included in your new home

- Category 1 façade
- Timber laminate flooring & loop pile carpet
- Coloured Concrete Driveway
- Stone benchtops to kitchen, ensuite and bathroom
- European Design flickmixer tapware
- Rain head showers
- Council and Developer Requirements
- Tiled shower bases
- Double Lock Up Garage with remote control door
- Gas ducted heating throughout
- Fixed site costs
- 7 Star Energy Rating
- Solar System

## ENQUIRE NOW:

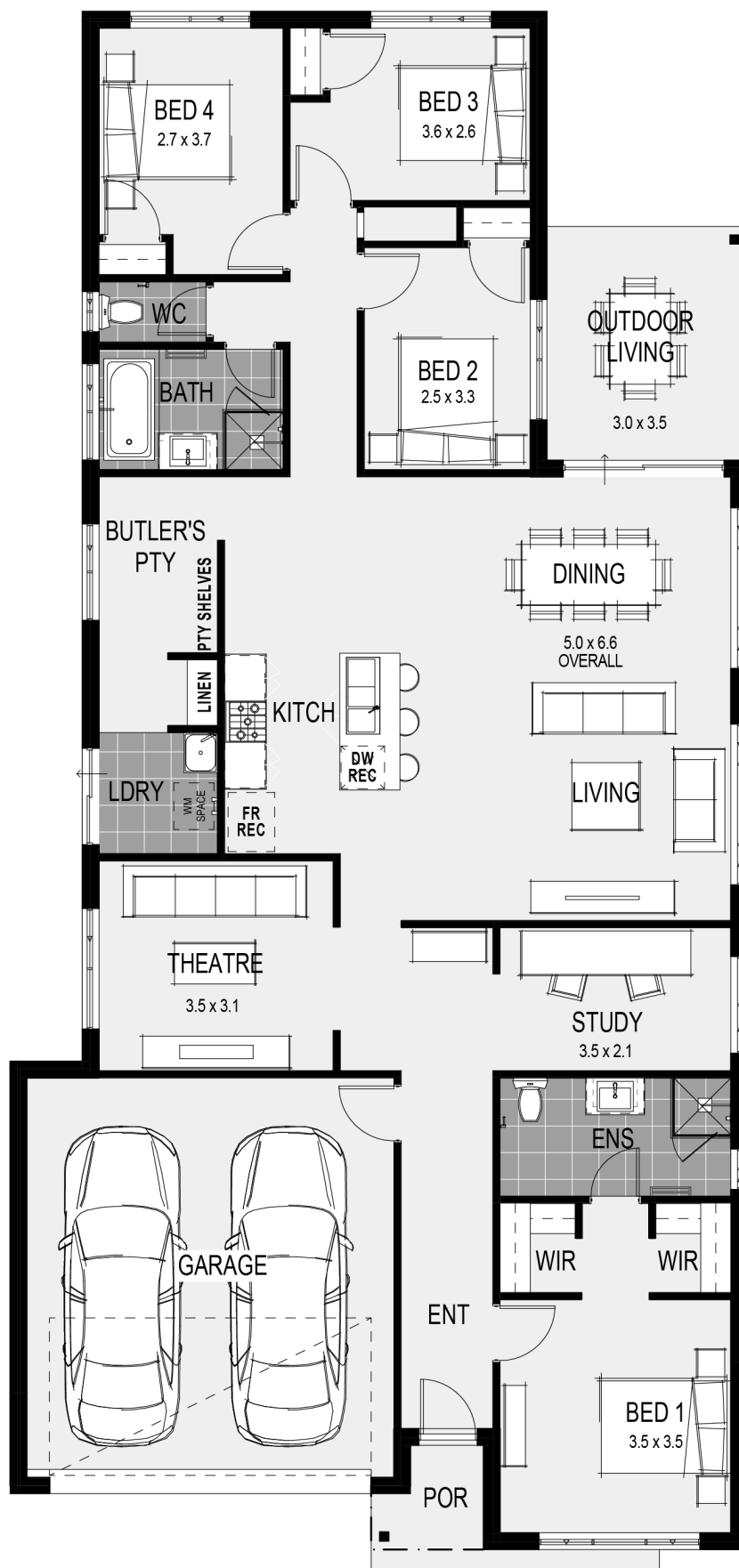
Jarrad Hodge • P: 0418 394 708 • E: [jarrad.hodge@homegroup.com.au](mailto:jarrad.hodge@homegroup.com.au)

Group

\*All Images and plans depicted are for illustrative purposes only and are subject to change. This work or any part of it may not be reproduced or copied in any form without the prior written consent of Home Group. © Home Group Pty Ltd CDB-U 59667. \*All Prices and specifications shown are subject to change without notice, and are subject to final confirmation upon the terms of any agreement with Home Group at the time of purchase. For full terms and conditions applicable please see [www.homegroup.com.au/terms](http://www.homegroup.com.au/terms)

## House Features:

- ✓ NBN connection, Council Charges & Developer Requirements
- ✓ \$30,000 Designer Kitchen Included - 1200mm island bench with stone benchtops, Westinghouse 900mm appliances with freestanding stove, Integrated rangehood, Soft close doors & drawers, high gloss cabinetry, subway tiled splashback, double pull out bin
- ✓ Coloured throughout Driveway
- ✓ Titled Block!
- ✓ Corner Treatment
- ✓ For a limited time only the Electronic Smart Lock Upgrade is included for Free!
- ✓ 7-Star Energy Efficiency and NCC Requirements Included



## ENQUIRE NOW:

Jarrad Hodge • P: 0418 394 708 • E: [jarrad.hodge@homegroup.com.au](mailto:jarrad.hodge@homegroup.com.au)

Group

\*All Images and plans depicted are for illustrative purposes only and are subject to change. This work or any part of it may not be reproduced or copied in any form without the prior written consent of Home Group. © Home Group Pty Ltd CDB-U 59667. \*All Prices and specifications shown are subject to change without notice, and are subject to final confirmation upon the terms of any agreement with Home Group at the time of purchase. For full terms and conditions applicable please see [www.homegroup.com.au/terms](http://www.homegroup.com.au/terms)